



RACE ORGANIZATION & MANAGEMENT FROM BEER CANS TO THE OLYMPICS

Matt Bounds
US Sailing National Judge / National Race Officer



Detroit Regional Yacht-Racing Association

February 21, 2018



RACE ORGANIZATION & MANAGEMENT FROM BEER CANS TO THE OLYMPICS

Matt Bounds
US Sailing National Judge / National Race Officer



Detroit Regional Yacht-Racing Association

February 21, 2018



RACE ORGANIZATION & MANAGEMENT FROM BEER CANS TO THE OLYMPICS

Matt Bounds
US Sailing National Judge / National Race Officer



Detroit Regional Yacht-Racing Association

February 21, 2018

OVERVIEW

- ▶ Housekeeping
- ▶ Who are we?
- ▶ About Race Organization / Management
 - ▶ Race Org 201 – Beer Can Racing
 - ▶ Race Org 301 – Regional Championship
 - ▶ Race Org 401 – Club Multi-Class Championship
 - ▶ Grad School – National / North American Champs
 - ▶ Doctorate Level – Sailing World Cup / Olympics
- ▶ Unsolicited Advice
- ▶ Questions
- ▶ Resources





and jibs as everyone rushed to take
advantage of what we thought would be
a few hours of sun and manageable
winds. The first race started at noon in
fair winds. Race spectators enjoyed

16B second place winner, Matt Bounds of
Richmond shows how he gets from regatta to
regatta without a trailer.



STROH'S SPONSORS “CLOSE ENCOUNTER OF THE STARBOARD K





2018 REGATTA SCHEDULE

- ▶ DRYA Chief Judge
- ▶ Judge – MSCA Women's Nationals Qualifier
- ▶ PRO – Bayview One-Design Regatta
- ▶ RO – Cleveland Race Week Offshore Regatta
- ▶ Judge – Sarnia Sailfest, SYC
- ▶ CRO – World Sailing Youth Worlds, Corpus Christi
- ▶ PRO – Chubb US SAILING Junior Championships
- ▶ RO – T-Ten North Americans, PHYC
- ▶ RO – Moth North Americans, BYC
- ▶ RO – Hobie 16 North Americans, Navarre, FL



WHO ARE WE?

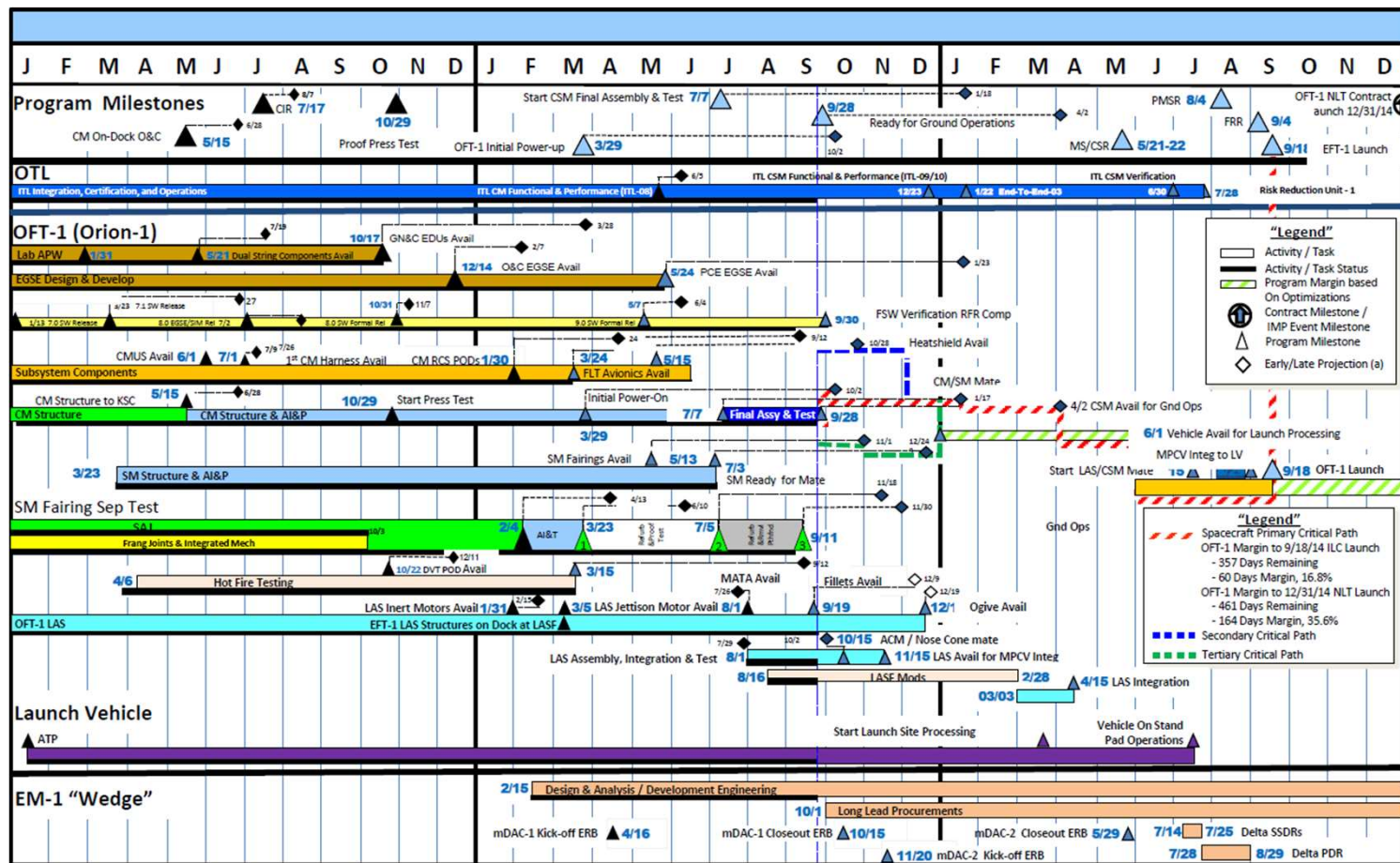
- ▶ Sailors
- ▶ Racers (Competitors)
- ▶ Organizers (Organizing Authorities)
- ▶ Race Committee (incl. scoring and mark boats)
- ▶ Measurers (Technical Committee)
- ▶ Certified Race Officials (ROs, Judges, Umpires)



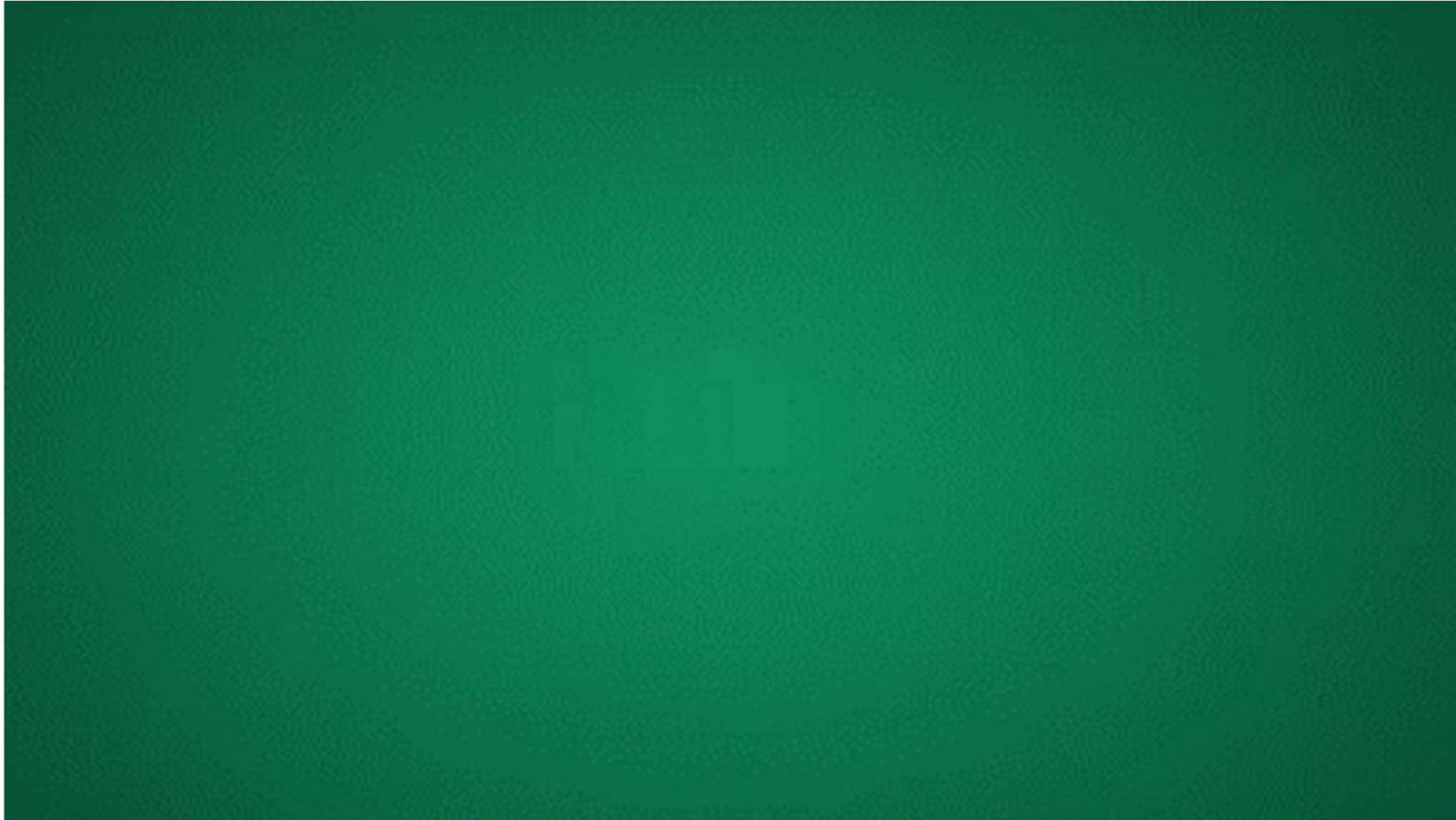
ABOUT RACE ORGANIZATION AND MANAGEMENT



ABOUT RACE ORGANIZATION AND MANAGEMENT



ABOUT RACE ORGANIZATION AND MANAGEMENT



COMPETITORS



COMPETITORS



COMPETITORS



COMPETITORS



ORGANIZERS



ORGANIZERS



ORGANIZERS



USA 2017
World Cup
Series



Presented by  sunbrella

January 22-29, 2017



RACE COMMITTEE



RACE COMMITTEE



RACE COMMITTEE



RACE COMMITTEE



RACE COMMITTEE



PROTEST COMMITTEE



PROTEST COMMITTEE



PROTEST COMMITTEE



PROTEST COMMITTEE



TECHNICAL COMMITTEE



TECHNICAL COMMITTEE



TECHNICAL COMMITTEE



RACE ORG 201

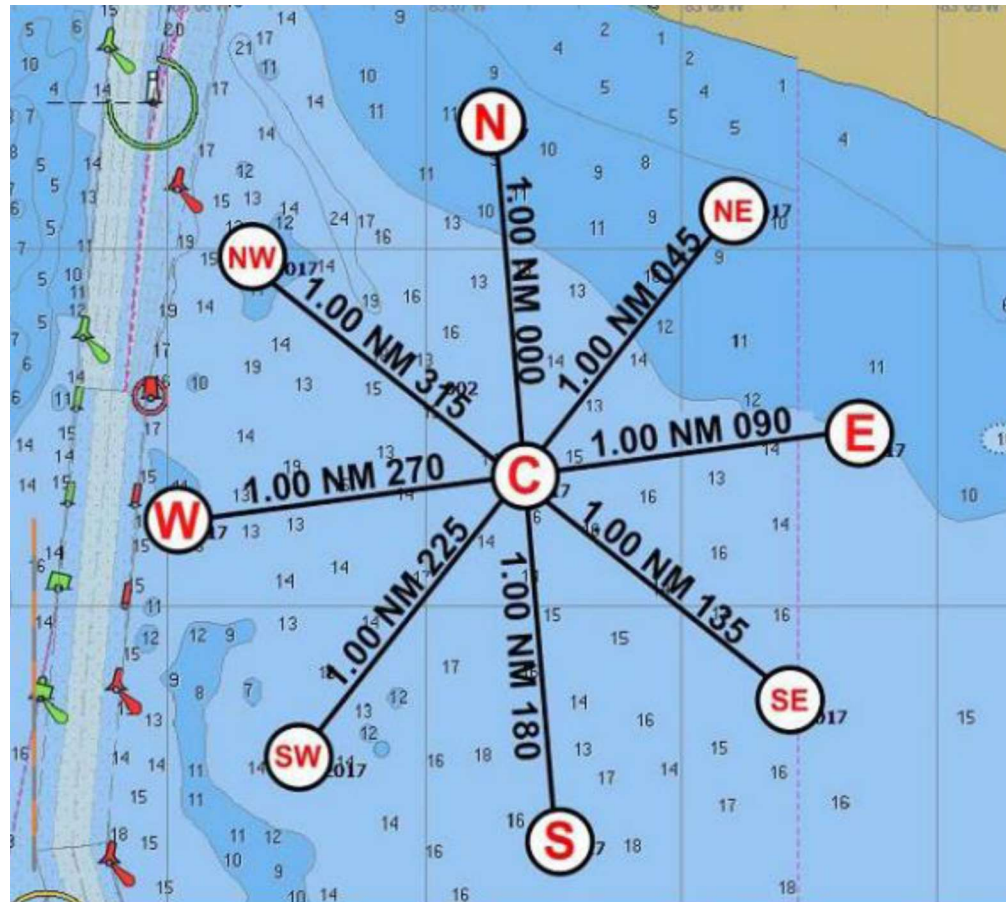
BEER CAN RACING



RACE ORG 201

BEER CAN RACING

► Fixed Marks



RACE ORG 201

BEER CAN RACING

- ▶ Fixed Marks
- ▶ Limited Course Selections





Attachment A

FORA YACHT CLUB
Race Committee

2017 FYC Regatta Courses

Approximate						R/C Help	to first mark
Wind Direction		Spinnaker	Distance	JAM	Distance	Wind Speed	
335-15 (353)	N1	C-Np-Wp-Sp-C	4.9	C-Np-Sp-C	4.1	0 to 4 (light and variable)	353
	N2	C-Np-Wp-Sp-Np-C	6.9	C-Np-NWp-Ep-Np-C	6	5 to 8 (dimenishing wind)	
	N3	C-Np-Wp-Sp-Np-Sp-C	9	C-Np-NWp-SWp-NWp-SWp-Sp-C	7.8	7 to 14 (steady)	
	N4	C-Np-Wp-Sp-Np-Sp-Np-C	11	C-Np-Wp-Sep-Nep-Sep-Nep-Np-C	10.4	12+ (steady)	
Wind Direction		Spinnaker	Distance	JAM	Distance		
10-30	NE1	C-NEp-NWp-SWp-C	4.8	C-NEp-SWp-C	4	0 to 4 (light and variable)	38
	NE2	C-NEp-NWp-SWp-NEp-C	6.8	C-NEp-Np-SEp-NEp-C	6.00	5 to 8 (dimenishing wind)	
	NE3	C-NEp-NWp-SWp-NEp-SWp-C	8.8	C-Nep-Np-Wp-Np-Wp-SWp-C	7.8	7 to 14 (steady)	
	NE4	C NEp NWp SWp NEp SWp NEp C	10.8	C Nep NWp Sp Ep Sp Ep Nep C	10.3	12+ (steady)	
Wind Direction		Spinnaker	Distance	JAM	Distance		
56-105	E1	C-Ep-Np-Wp-C	4.8	C-Ep-Wp-C	4	0 to 4 (light and variable)	84
	E2	C-Ep-Np-Wp-Ep-C	6.8	C-Ep-NEp-Sp-Ep-C	6.00	5 to 8 (dimenishing wind)	
	E3	C-Ep-Np-Wp-Ep-Wp-C	8.8	C-Ep-NEp-NWp-NEp-NWp-Wp-C	7.8	7 to 14 (steady)	
	E4	C-Ep-Np-Wp-Ep-Wp-Ep-C	10.8	C-Ep-Np-SWp-Sp-SWp-Sp-Ep-C	10.3	12+ (steady)	
Wind Direction		Spinnaker	Distance	JAM	Distance		
106-145	SE1	C-SEp-NEp-NWp-C	4.8	C-SEp-NWp-C	4	0 to 4 (light and variable)	129
	SE2	C-SEp-NEp-NWp-SEp-C	6.8	C-SEp-Ep-SWp-SEp-C	6.00	5 to 8 (dimenishing wind)	
	SE3	C-SEp-NEp-NWp-SEp-NWp-C	8.8	C-SEp-Ep-Np-Ep-Np-NWp-C	7.8	7 to 14 (steady)	
	SE4	C-SEp-NEp-NWp-SEp-NWp-SEp-C	10.8	C-SEp-NEp-Wp-SWp-Wp-SWp-SEp-C	10.3	12+ (steady)	
Wind Direction		Spinnaker	Distance	JAM	Distance		
156-195	S1	C-Sp-Ep-Np-C	4.9	C-Sp-Np-C	4.1	0 to 4 (light and variable)	175
	S2	C-Sp-Ep-Np-Sp-C	6.9	C-Sp-SEp-Wp-Sp-C	6	5 to 8 (dimenishing wind)	
	S3	C-Sp-Ep-Np-Sp-Np-C	9	C-Sp-SEp-NEp-SEp-NEp-Np-C	7.8	7 to 14 (steady)	
	S4	C-Sp-Ep-Np-Sp-Np-Sp-C	11	C-Sp-Ep-NWp-Wp-NWp-Wp-Sp-C	10.4	12+ (steady)	
Wind Direction		Spinnaker	Distance	JAM	Distance		
196-244	SW1	C-SWp-SEp-NEp-C	4.8	C-SWp-NEp-C	4	0 to 4 (light and variable)	219
	SW2	C-SWp-Sep-Nep-SWp-C	6.8	C-SWp-Sp-NWp-SWp-C	6.00	5 to 8 (dimenishing wind)	
	SW3	C-SWp-Sep-Nep-SWp-Nep-C	8.8	C-SWp-Sp-Ep-Sp-Ep-NEp-C	7.8	7 to 14 (steady)	
	SW4	C-SWp-Sep-Nep-SWp-Nep-SWp-C	10.8	C-SWp-SEp-Np-NWp-Np-NWp-SWp-C	10.3	12+ (steady)	
Wind Direction		Spinnaker	Distance	JAM	Distance		
254-290	W1	C-Wp-Sp-Ep-C	4.9	C-Wp-Ep-C	4.1	0 to 4 (light and variable)	263
	W2	C-Wp-Sp-Ep-Wp-C	6.9	C-Wp-SWp-Np-Wp-C	6	5 to 8 (dimenishing wind)	
	W3	C-Wp-Sp-Ep-Wp-Ep-C	9	C-Wp-SWp-SEp-SWp-SEp-Ep-C	7.8	7 to 14 (steady)	
	W4	C-Wp-Sp-Ep-Wp-Ep-Wp-C	11	C-Wp-Sp-NEp-NWp-NEp-NWp-Wp-C	10.4	12+ (steady)	
Wind Direction		Spinnaker	Distance	JAM	Distance		
291-334	NW1	C-NWp-SWp-SEp-C	4.9	C-NWp-SEp	4.1	0 to 4 (light and variable)	308
	NW2	C-NWp-SWp-Sep-NWp-C	6.9	C-NWp-Wp-NEp-NWp-C	6	5 to 8 (dimenishing wind)	
	NW3	C-NWp-SWp-Sep-NWp-Sep-C	9	C-NWp-Wp-Sp-Wp-Sp-SEp-C	7.8	7 to 14 (steady)	
	NW4	C-NWp-SWp-Sep-NWp-Sep-NWp-C	11	C-NWp-SWp-Ep-Np-Ep-Np-NWp-C	10.4	12+ (steady)	



Attachment A

Ford Yacht Club
Race Committee

2017 FYC Regatta Courses

Approximate						R/C Help	to first mark
Wind Direction		Spinnaker	Distance	JAM	Distance	Wind Speed	
335-15 (353)	N1	C-Np-Wp-Sp-C	4.9	C-Np-Sp-C	4.1	0 to 4 (light and variable)	353
	N2	C-Np-Wp-Sp-Np-C	6.9	C-Np-NWp-Ep-Np-C	6	5 to 8 (dimenishing wind)	
	N3	C-Np-Wp-Sp-Np-Sp-C	9	C-Np-NWp-SWp-NWp-SWp-Sp-C	7.8	7 to 14 (steady)	
	N4	C-Np-Wp-Sp-Np-Sp-Np-C	11	C-Np-Wp-Sep-Nep-Sep-Np-C	10.4	12+ (steady)	
Wind Direction		Spinnaker	Distance	JAM	Distance		
10-30	NE1	C-NEp-NWp-SWp-C	4.8	C-NEp-SWp-C	4	0 to 4 (light and variable)	38
	NE2	C-NEp-NWp-SWp-NEp-C	6.8	C-NEp-Np-SEp-NEp-C	6.00	5 to 8 (dimenishing wind)	
	NE3	C-NEp-NWp-SWp-NEp-SWp-C	8.8	C-Nep-Np-Wp-Np-Wp-SWp-C	7.8	7 to 14 (steady)	
	NE4	C-NEp-NWp-SWp-NEp-SWp-NEp-C	10.8	C-Nep-NWp-Sp-Ep-Sp-Ep-Nep-C	10.3	12+ (steady)	
Wind Direction		Spinnaker	Distance	JAM	Distance		
56-105	E1	C-Ep-Np-Wp-C	4.8	C-Ep-Wp-C	4	0 to 4 (light and variable)	84
	E2	C-Ep-Np-Wp-Ep-C	6.8	C-Ep-NEp-Sp-Ep-C	6.00	5 to 8 (dimenishing wind)	
	E3	C-Ep-Np-Wp-Ep-Wp-C	8.8	C-Ep-NEp-NWp-NEp-NWp-Wp-C	7.8	7 to 14 (steady)	
	E4	C-Ep-Np-Wp-Ep-Wp-Ep-C	10.8	C-Ep-Np-SWp-Sp-SWp-Sp-Ep-C	10.3	12+ (steady)	
Wind Direction		Spinnaker	Distance	JAM	Distance		
106-145	SE1	C-SEp-NEp-NWp-C	4.8	C-SEp-NWp-C	4	0 to 4 (light and variable)	129
	SE2	C-SEp-NEp-NWp-SEp-C	6.8	C-SEp-Ep-SWp-SEp-C	6.00	5 to 8 (dimenishing wind)	
	SE3	C-SEp-NEp-NWp-SEp-NWp-C	8.8	C-SEp-Ep-Np-Ep-Np-NWp-C	7.8	7 to 14 (steady)	
	SE4	C-SEp-NEp-NWp-SEp-NWp-SEp-C	10.8	C-SEp-NEp-Wp-SWp-Wp-SWp-SEp-C	10.3	12+ (steady)	
Wind Direction		Spinnaker	Distance	JAM	Distance		
156-195	S1	C-Sp-Ep-Np-C	4.9	C-Sp-Np-C	4.1	0 to 4 (light and variable)	175
	S2	C-Sp-Ep-Np-Sp-C	6.9	C-Sp-SEp-Wp-Sp-C	6	5 to 8 (dimenishing wind)	
	S3	C-Sp-Ep-Np-Sp-Np-C	9	C-Sp-SEp-NEp-SEp-NEp-Np-C	7.8	7 to 14 (steady)	
	S4	C-Sp-Ep-Np-Sp-Np-Sp-C	11	C-Sp-Ep-NWp-Wp-NWp-Wp-Sp-C	10.4	12+ (steady)	
Wind Direction		Spinnaker	Distance	JAM	Distance		
196-244	SW1	C-SWp-SEp-NEp-C	4.8	C-SWp-NEp-C	4	0 to 4 (light and variable)	219
	SW2	C-SWp-Sep-Nep-SWp-C	6.8	C-SWp-Sp-NWp-SWp-C	6.00	5 to 8 (dimenishing wind)	
	SW3	C-SWp-Sep-Nep-SWp-Nep-C	8.8	C-SWp-Sp-Ep-Sp-Ep-NEp-C	7.8	7 to 14 (steady)	
	SW4	C-SWp-Sep-Nep-SWp-Nep-SWp-C	10.8	C-SWp-SEp-Np-NWp-Np-NWp-SWp-C	10.3	12+ (steady)	
Wind Direction		Spinnaker	Distance	JAM	Distance		
254-290	W1	C-Wp-Sp-Ep-C	4.9	C-Wp-Ep-C	4.1	0 to 4 (light and variable)	263
	W2	C-Wp-Sp-Ep-Wp-C	6.9	C-Wp-SWp-Np-Wp-C	6	5 to 8 (dimenishing wind)	
	W3	C-Wp-Sp-Ep-Wp-Ep-C	9	C-Wp-SWp-SEp-SWp-SEp-Ep-C	7.8	7 to 14 (steady)	
	W4	C-Wp-Sp-Ep-Wp-Ep-Wp-C	11	C-Wp-Sp-NEp-NWp-NEp-NWp-Wp-C	10.4	12+ (steady)	
Wind Direction		Spinnaker	Distance	JAM	Distance		
291-334	NW1	C-NWp-SWp-SEp-C	4.9	C-NWp-SEp	4.1	0 to 4 (light and variable)	308
	NW2	C-NWp-SWp-Sep-NWp-C	6.9	C-NWp-Wp-NEp-NWp-C	6	5 to 8 (dimenishing wind)	
	NW3	C-NWp-SWp-Sep-NWp-Sep-C	9	C-NWp-Wp-Sp-Wp-Sp-SEp-C	7.8	7 to 14 (steady)	
	NW4	C-NWp-SWp-Sep-NWp-Sep-NWp-C	11	C-NWp-SWp-Ep-Np-Ep-Np-NWp-C	10.4	12+ (steady)	

RACE ORG 201

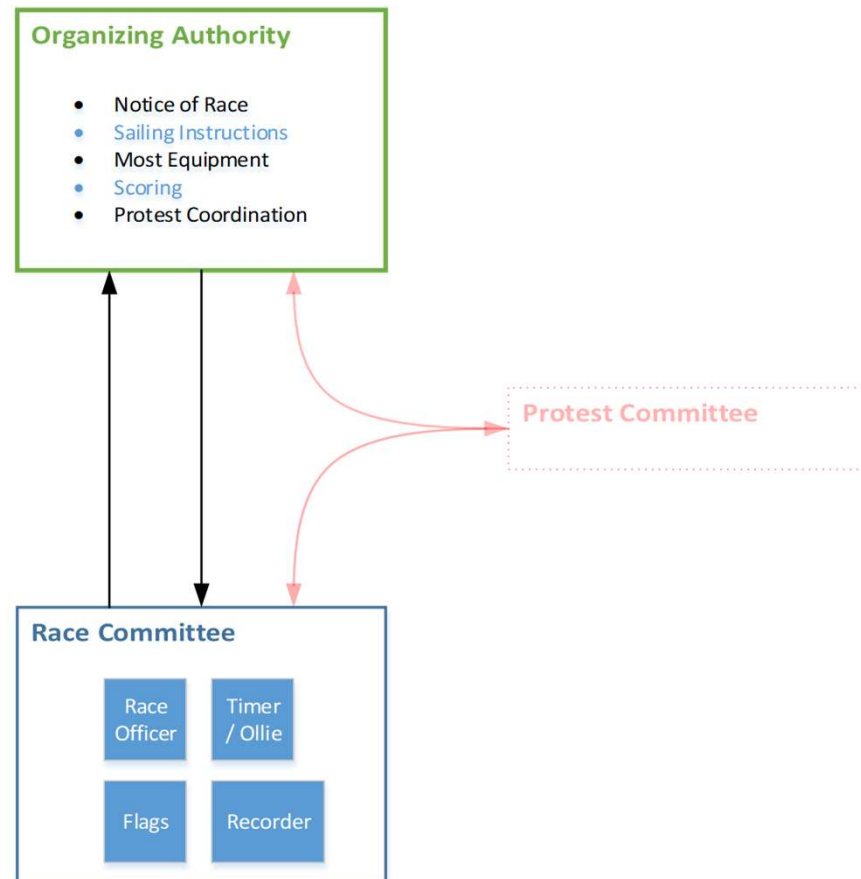
BEER CAN RACING

- ▶ Fixed Marks
- ▶ Limited Course Selections
- ▶ Rolling Starts
- ▶ Probably no starting penalties
- ▶ Lots of functions centralized with the OA



RACE ORG 201

ORGANIZATION CHART



RACE ORG 201

RACE COMMITTEE SKILLS / TASKS

- ▶ Wind Readings
- ▶ Set Starting Line
- ▶ Choose / Display Course(s)
- ▶ Run Starting Sequence
- ▶ Proper use of X-ray and VHF over early calls
- ▶ Record Finishes – send to Scorer



RACE ORG 301

REGIONAL CHAMPIONSHIPS



RACE ORG 301

REGIONAL CHAMPIONSHIPS

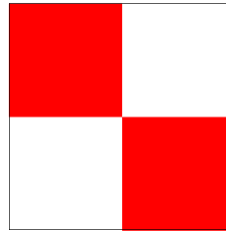
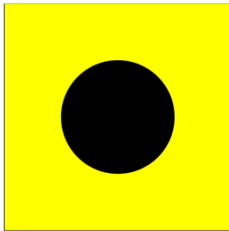
- ▶ Drop Marks
- ▶ Limited Course Selections
- ▶ Single Start



RACE ORG 301

REGIONAL CHAMPIONSHIPS

- ▶ Drop Marks
- ▶ Limited Course Selections
- ▶ Single Start
- ▶ Starting penalties



RACE ORG 301

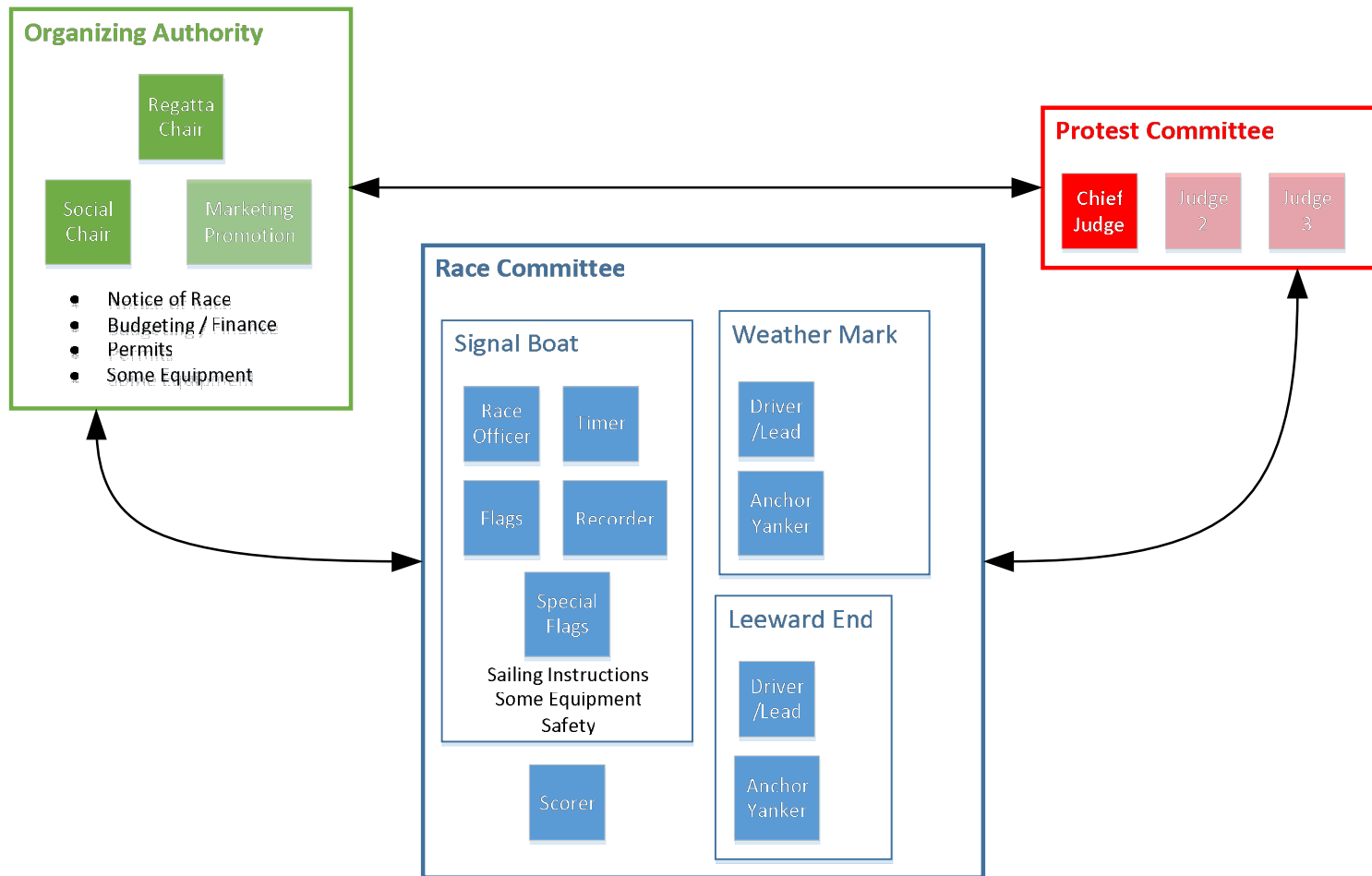
REGIONAL CHAMPIONSHIPS

- ▶ Drop Marks
- ▶ Limited Course Selections
- ▶ Single Start
- ▶ Starting penalties
- ▶ Scoring done by RC
- ▶ Race Officials Certified / Separate PC



RACE ORG 301

ORGANIZATION CHART



RACE ORG 301

RACE COMMITTEE SKILLS

- ▶ Drafting race documents – including an emergency plan
- ▶ Basic team building / delegation of duties
- ▶ Competitor relations
- ▶ VHF communications
- ▶ Working with mark boats - course configuration and setting



RACE ORG 301

RACE COMMITTEE SKILLS



RACE ORG 301

RACE COMMITTEE SKILLS

- ▶ Drafting race documents – including an emergency plan
- ▶ Basic team building / delegation of duties
- ▶ Competitor relations
- ▶ VHF communications
- ▶ Working with mark boats - course configuration and setting
- ▶ Knowing when to use starting penalties



RACE ORG 301

RACE COMMITTEE SKILLS



RACE ORG 301

RACE COMMITTEE SKILLS

- ▶ Drafting race documents – including an emergency plan
- ▶ Basic team building / delegation of duties
- ▶ Competitor relations
- ▶ VHF communications
- ▶ Working with mark boats - course configuration and setting
- ▶ Knowing when to use starting penalties
- ▶ Scoring



RC 401

CLUB MULTI-CLASS CHAMPIONSHIPS



RC 401

CLUB MULTI-CLASS CHAMPIONSHIPS

► Multiple Courses



RC 401

CLUB MULTI-CLASS CHAMPIONSHIPS

- ▶ Multiple Courses
- ▶ Multiple, diverse classes – separation issues



RC 401

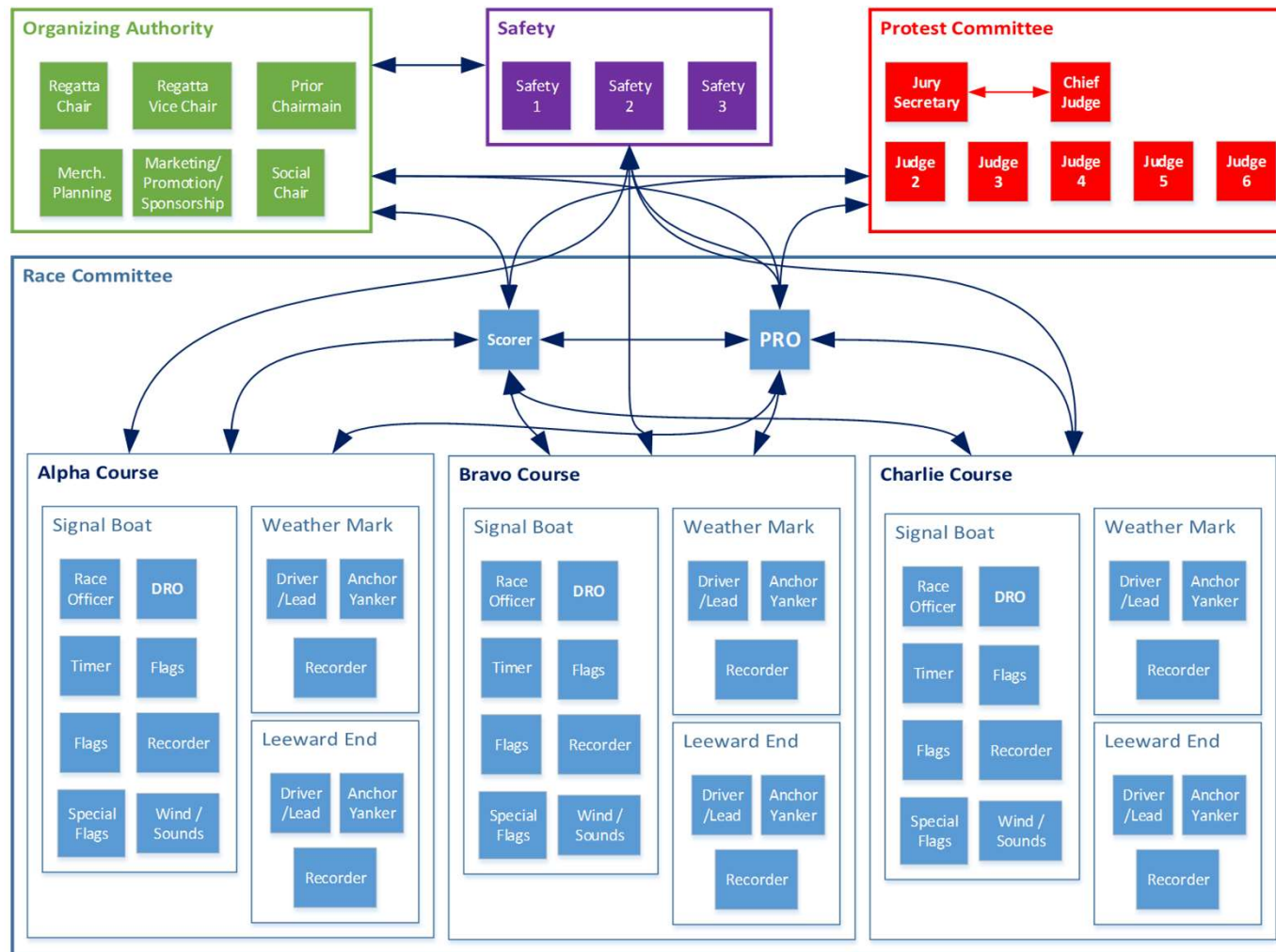
CLUB MULTI-CLASS CHAMPIONSHIPS

- ▶ Multiple Courses
- ▶ Multiple, diverse classes – separation issues
- ▶ Moderate starting penalties
- ▶ Proper procedures more important
- ▶ Formal communication channels
- ▶ Race Officials Regionally / Nationally Certified



RACE ORG 401

ORGANIZATION CHART



RACE ORG 401

SKILLS / TASKS

- ▶ Team Building / Mentoring
- ▶ Target times

Target Time Calculations															Based on data collected June & July 2013					
T-10																				
Windward/Leeward Course																				
Wind Range	5 - 8 kts					8 - 12 kts					12 - 15 kts					15 + kts				
Upwind Speed	22.3 mins/mile			Up Time (mins)	Down Time (mins)	16.8 mins/mile			Up Time (mins)	Down Time (mins)	13.0 mins/mile			Up Time (mins)	Down Time (mins)	13.4 mins/mile			Up Time (mins)	Down Time (mins)
Downwind Speed	20.3 mins/mile					12.7 mins/mile					9.3 mins/mile					8.3 mins/mile				
Leg Length Nautical Miles	L1	L2	L3			L1	L2	L3			L1	L2	L3			L1	L2	L3		
1.0	42.6	85.2	127.8	22.3	20.3	29.5	59.0	88.5	16.8	12.7	22.3	44.6	66.9	13.0	9.3	21.7	43.4	65.1	13.4	8.3
1.1	46.9	93.7	140.6	24.5	22.3	32.5	64.9	97.4	18.5	14.0	24.5	49.1	73.6	14.3	10.2	23.9	47.7	71.6	14.7	9.1
1.2	51.1	102.2	153.4	26.8	24.4	35.4	70.8	106.2	20.2	15.2	26.8	53.5	80.3	15.6	11.2	26.0	52.1	78.1	16.1	10.0
1.3	55.4	110.8	166.1	29.0	26.4	38.4	76.7	115.1	21.8	16.5	29.0	58.0	87.0	16.9	12.1	28.2	56.4	84.6	17.4	10.8
1.4	59.6	119.3	178.9	31.2	28.4	41.3	82.6	123.9	23.5	17.8	31.2	62.4	93.7	18.2	13.0	30.4	60.8	91.1	18.8	11.6
1.5	63.9	127.8	191.7	33.5	30.5	44.3	88.5	132.8	25.2	19.1	33.5	66.9	100.4	19.5	14.0	32.6	65.1	97.7	20.1	12.5
1.6	68.2	136.3	204.5	35.7	32.5	47.2	94.4	141.6	26.9	20.3	35.7	71.4	107.0	20.8	14.9	34.7	69.4	104.2	21.4	13.3
1.7	72.4	144.8	217.3	37.9	34.5	50.2	100.3	150.5	28.6	21.6	37.9	75.8	113.7	22.1	15.8	36.9	73.8	110.7	22.8	14.1
1.8	76.7	153.4	230.0	40.1	36.5	53.1	106.2	159.3	30.2	22.9	40.1	80.3	120.4	23.4	16.7	39.1	78.1	117.2	24.1	14.9
1.9	80.9	161.9	242.8	42.4	38.6	56.1	112.1	168.2	31.9	24.1	42.4	84.7	127.1	24.7	17.7	41.2	82.5	123.7	25.5	15.8
2.0	85.2	170.4	255.6	44.6	40.6	59.0	118.0	177.0	33.6	25.4	44.6	89.2	133.8	26.0	18.6	43.4	86.8	130.2	26.8	16.6



RACE ORG 401

SKILLS / TASKS

- ▶ Team Building / Mentoring
- ▶ Target times
- ▶ Fleet separation – race simulations



RACE ORG 401

SKILLS / TASKS

Ratings						
Melges 24	68.9	69.3	68.9	68.3	66.3	
Express 27	78.1	79.8	79.1	77.9		9.20
T-10	84.3	86.2	84.9	82.8	81.0	6.20
Cal 25	91.2	92.2	92.0	91.1	89.4	6.90
Same Weather Mark						
Mark-to-Mark Time						
	Start	WM1	Gate1	WM2	Finish	Total
Melges 24	-	12.0	8.0	12.0	8.0	40.0
Express 27	-	13.6	9.1	13.6	9.1	45.3
T-10	-	14.7	9.8	14.7	9.8	48.9
Cal 25	-	15.9	10.6	15.9	10.6	52.9
Elapsed Time - 1 minute sequence gap						Gap
Melges 24	-	12.0	20.0	32.0	40.0	-
Express 27	6.0	19.6	28.7	42.3	51.3	11.3
T-10	12.0	26.7	36.5	51.2	60.9	9.6
Cal 25	18.0	33.9	44.5	60.4	70.9	10.0
						30.9



RACE ORG 401

SKILLS / TASKS

Ratings						
Melges 24	68.9	69.3	68.9	68.3	66.3	
Express 27	78.1	79.8	79.1	77.9		9.20
T-10	84.3	86.2	84.9	82.8	81.0	6.20
Cal 25	91.2	92.2	92.0	91.1	89.4	6.90
Same Weather Mark						
Mark-to-Mark Time						
	Start	WM1	Gate1	WM2	Finish	Total
Melges 24	-	12.0	8.0	12.0	8.0	40.0
Express 27	-	13.6	9.1	13.6	9.1	45.3
T-10	-	14.7	9.8	14.7	9.8	48.9
Cal 25	-	15.9	10.6	15.9	10.6	52.9
Elapsed Time - 1 minute sequence gap						
Melges 24	-	12.0	20.0	32.0	40.0	-
Express 27	6.0	19.6	28.7	42.3	51.3	11.3
T-10	12.0	26.7	36.5	51.2	60.9	9.6
Cal 25	18.0	33.9	44.5	60.4	70.9	10.0
						30.9



RACE ORG 401

SKILLS / TASKS

- ▶ Team Building / Mentoring
- ▶ Target times
- ▶ Fleet separation – race simulations
- ▶ Course Coordination
- ▶ Proper Documentation – good recording
- ▶ Protest Committee communication
- ▶ Working w/safety boats



GRADUATE SCHOOL NATIONAL / NORTH AMERICAN CHAMPIONSHIPS



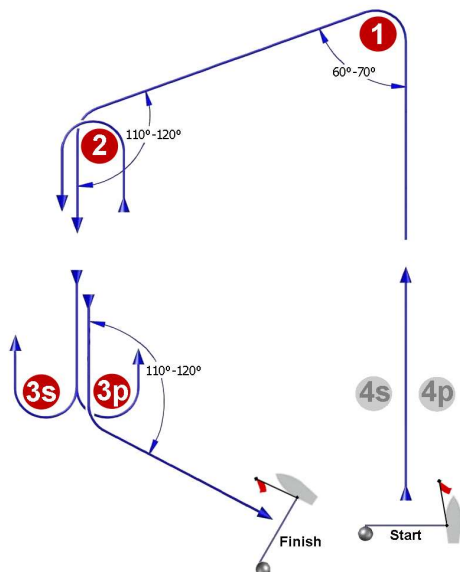
GRADUATE SCHOOL NATIONAL / NORTH AMERICAN CHAMPIONSHIPS

- ▶ Technical Committee – on site measurement
- ▶ One course – but it's a trapezoid



GRADUATE SCHOOL NATIONAL / NORTH AMERICAN CHAMPIONSHIPS

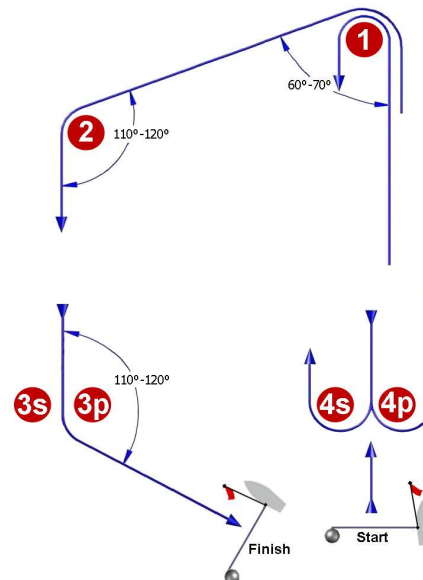
O



Course: Outer Trapezoid

Signal	Marking Rounding Order
O2	Start - 1 - 2 - 3s/3p - 2 - 3p - Finish
O3	Start - 1 - 2 - 3s/3p - 2 - 3s/3p - 2 - 3p - Finish
O4	Start - 1 - 2 - 3s/3p - 2 - 3s/3p - 2 - 3s/3p - 2 - 3p - Finish

I



Course: Inner Trapezoid

Signal	Marking Rounding Order
I2	Start - 1 - 4s/4p - 1 - 2 - 3p - Finish
I3	Start - 1 - 4s/4p - 1 - 4s/4p - 1 - 2 - 3p - Finish
I4	Start - 1 - 4s/4p - 1 - 4s/4p - 1 - 4s/4p - 1 - 2 - 3p - Finish



GRADUATE SCHOOL

NATIONAL / NORTH AMERICAN CHAMPIONSHIPS

- ▶ Technical Committee – on site measurement
- ▶ One course – but it's a trapezoid
- ▶ Lots of boats – two fleets / starts
- ▶ Advanced starting penalties



GRADUATE SCHOOL NATIONAL / NORTH AMERICAN CHAMPIONSHIPS



GRADUATE SCHOOL

NATIONAL / NORTH AMERICAN CHAMPIONSHIPS

- ▶ Technical Committee – on site measurement
- ▶ One course – but it's a trapezoid
- ▶ Lots of boats – two fleets / starts
- ▶ Advanced starting penalties
- ▶ Intl. Jury / On-the-water rule 42 enforcement



GRADUATE SCHOOL NATIONAL / NORTH AMERICAN CHAMPIONSHIPS



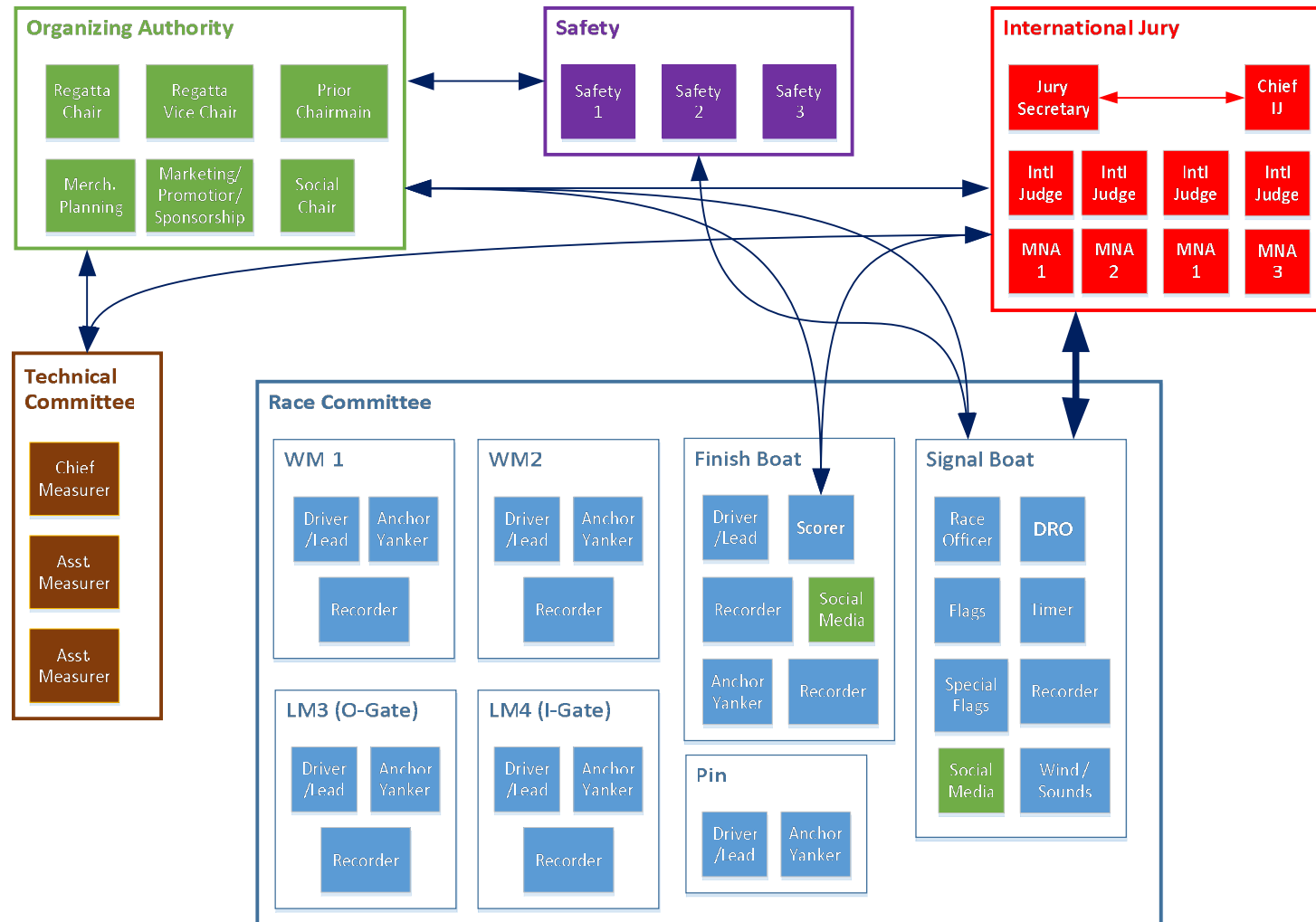
GRADUATE SCHOOL

NATIONAL / NORTH AMERICAN CHAMPIONSHIPS

- ▶ Technical Committee – on site measurement
- ▶ One course – but it's a trapezoid
- ▶ Lots of boats – two fleets / starts
- ▶ Advanced starting penalties
- ▶ Intl. Jury / On-the-water rule 42 enforcement
- ▶ Race Officials National / Internationally Certified
- ▶ Promotion / Social Media



GRADUATE SCHOOL ORGANIZATION CHART



GRADUATE SCHOOL

SKILLS / TASKS

- ▶ Team Building on Steroids – Staffing Charts
- ▶ More precise target times
- ▶ Coordination with on-the-water judges
- ▶ Advanced mark boat skills – GPS / angles / shifts
- ▶ Proper documentation a must
- ▶ Interfacing with Protest Committee



DOCTORATE LEVEL

SAILING WORLD CUP / OLYMPICS



DOCTORATE LEVEL

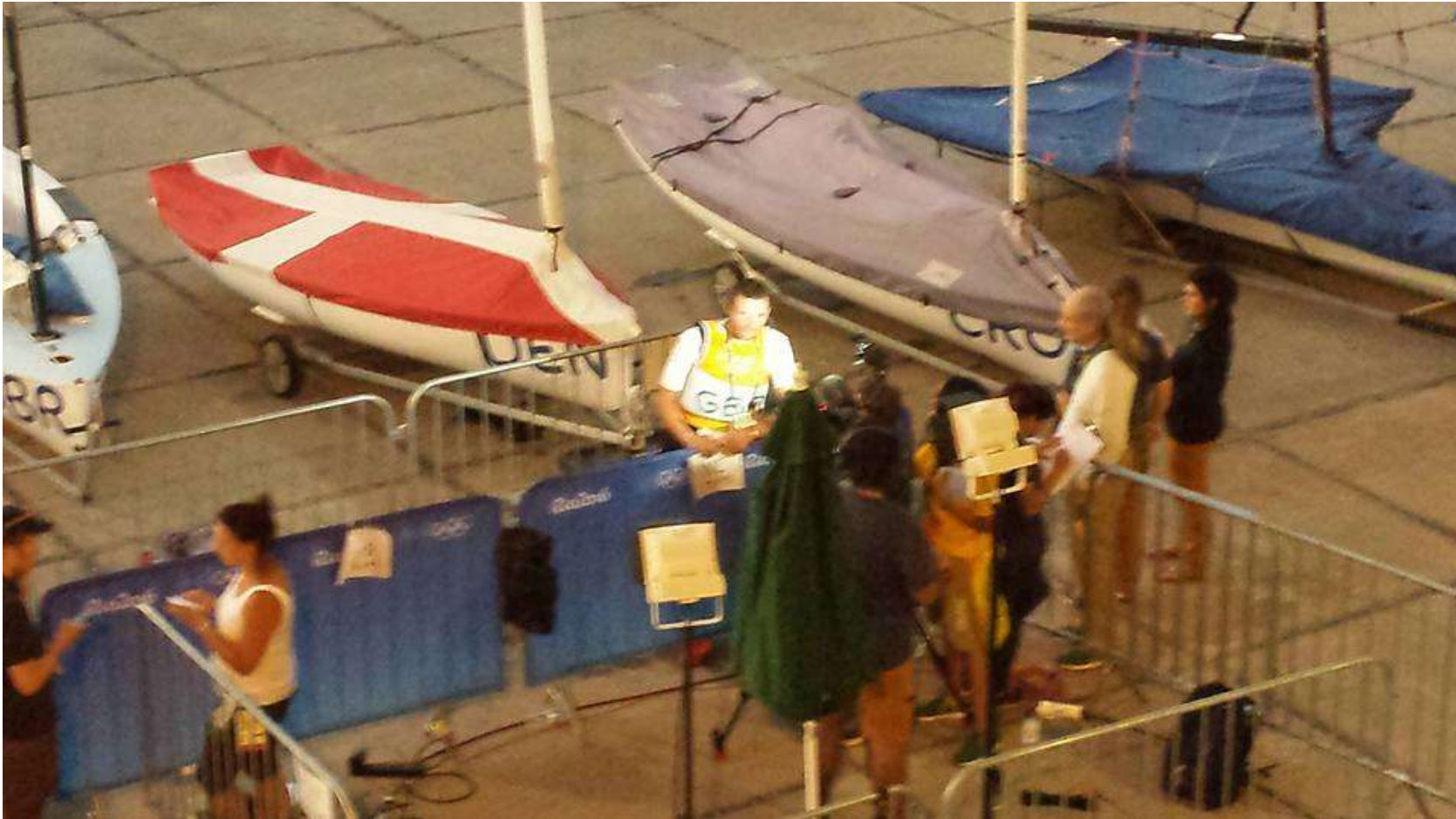
SAILING WORLD CUP / OLYMPICS

- ▶ Many different languages / cultures
- ▶ Tracking / Media Emphasis
- ▶ World Sailing Oversight
- ▶ Security / Quarantine Areas



DOCTORATE LEVEL

SAILING WORLD CUP / OLYMPICS



DOCTORATE LEVEL

SAILING WORLD CUP / OLYMPICS

- ▶ Many different languages / cultures
- ▶ Tracking / Media Emphasis
- ▶ World Sailing Oversight
- ▶ Security / Quarantine Areas
- ▶ Support Boats



DOCTORATE LEVEL

SAILING WORLD CUP / OLYMPICS



DOCTORATE LEVEL

SAILING WORLD CUP / OLYMPICS

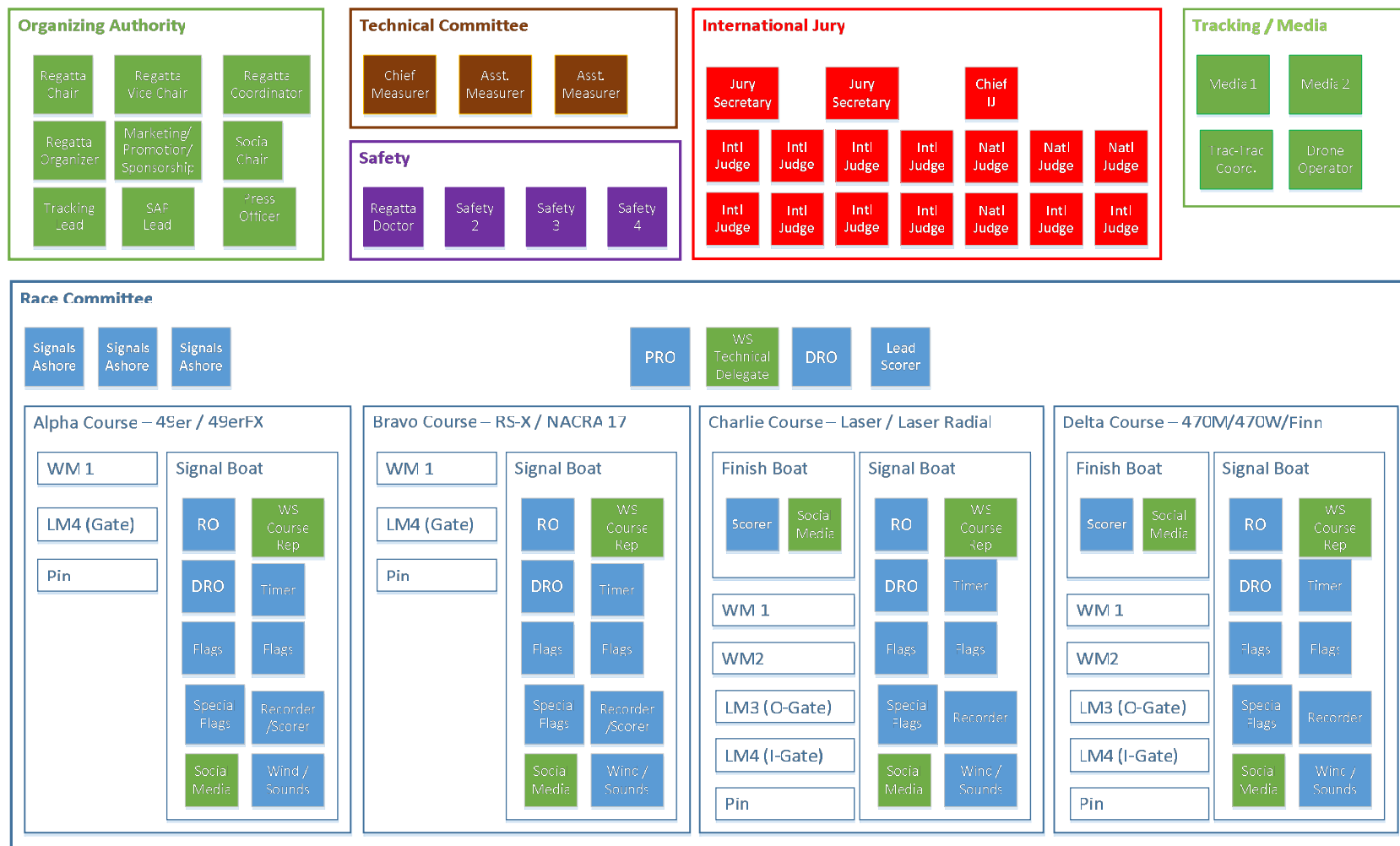
- ▶ Many different languages / cultures
- ▶ Tracking / Media Emphasis
- ▶ World Sailing Oversight
- ▶ Security / Quarantine Areas
- ▶ Support Boats
- ▶ Medal Races - Umpires
- ▶ Spread out venue - logistics



DOCTORATE LEVEL SAILING WORLD CUP / OLYMPICS



DOCTORATE LEVEL ORGANIZATION CHART



DOCTORATE LEVEL SKILLS / TASKS

- ▶ Emphasis on communications
- ▶ Large # of competitors / bottleneck coordination
- ▶ Target time critical – media coordination
- ▶ Recognition of cultural differences / languages
- ▶ Dealing with World Sailing Reps – bureaucracy
- ▶ Competing priorities



DOCTORATE LEVEL SKILLS / TASKS



RACE ORGANIZATION AND MANAGEMENT IS



Theater!



RACE ORGANIZATION AND MANAGEMENT IS



The Organizing Authority



RACE ORGANIZATION AND MANAGEMENT IS



Race Officer



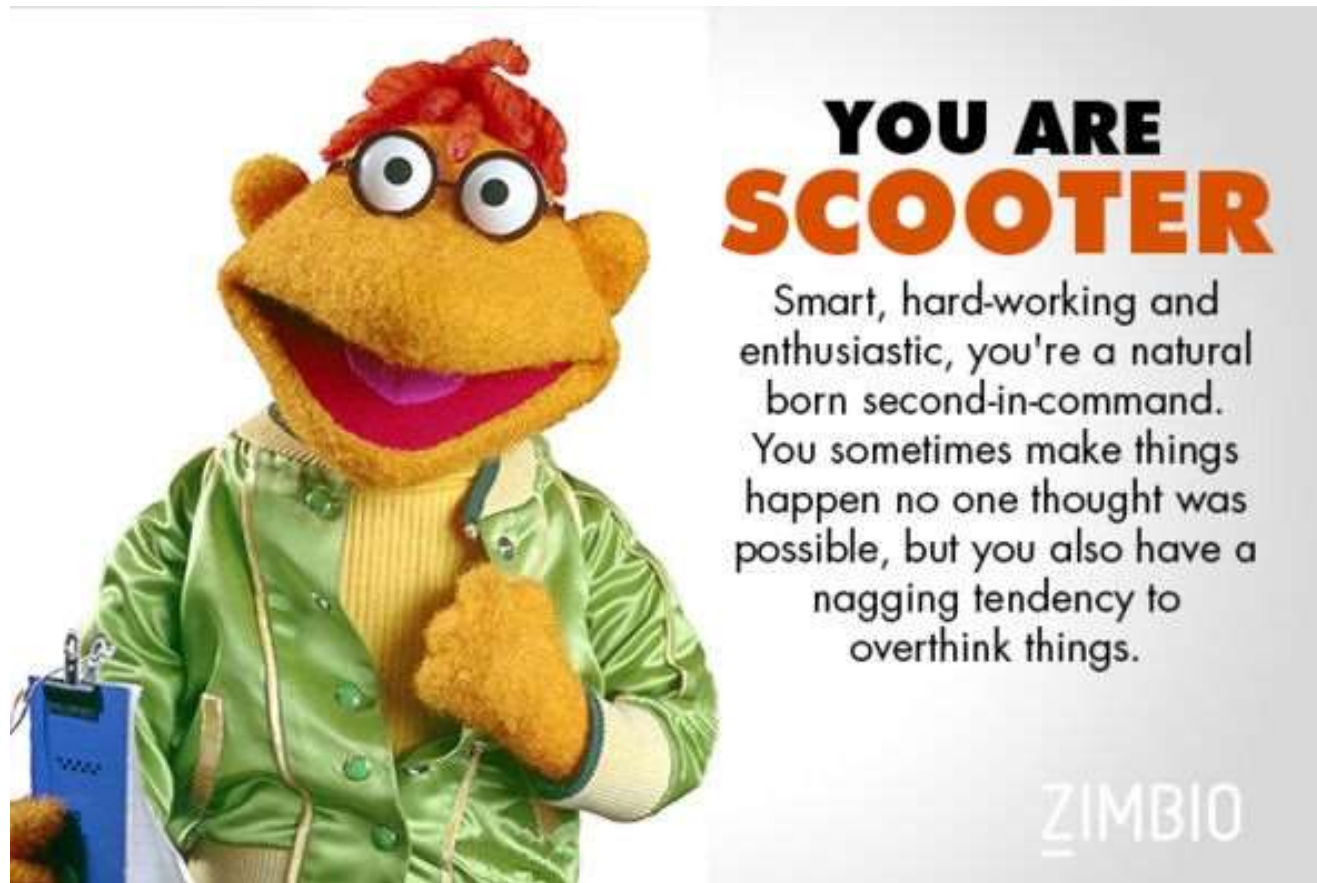
RACE ORGANIZATION AND MANAGEMENT IS



Mark Boat Operators



RACE ORGANIZATION AND MANAGEMENT IS



Technical Committee



RACE ORGANIZATION AND MANAGEMENT IS



Protest Committee



WHERE TO?

- ▶ *Volunteer!*
 - ▶ It will make you a better racer.
 - ▶ Make friends with a mentor
- ▶ *Get Certified!*
 - ▶ Three levels of Certification – Club, Regional & National
 - ▶ All levels include US Sailing liability insurance
 - ▶ **US Sailing One Day Race Management Seminar**
Crescent Sail Yacht Club – April 28
 - ▶ **US Sailing Judging Seminars**
None scheduled locally - yet



RESOURCES

- ▶ US Sailing – www.ussailing.org
 - ▶ Find a Race Official
 - ▶ Certification Seminars
- ▶ US Powerboating - www.uspowerboating.com
 - ▶ Safety, Rescue & Support Boat Handling course
 - ▶ Safe Powerboat Handling



QUESTIONS?

